

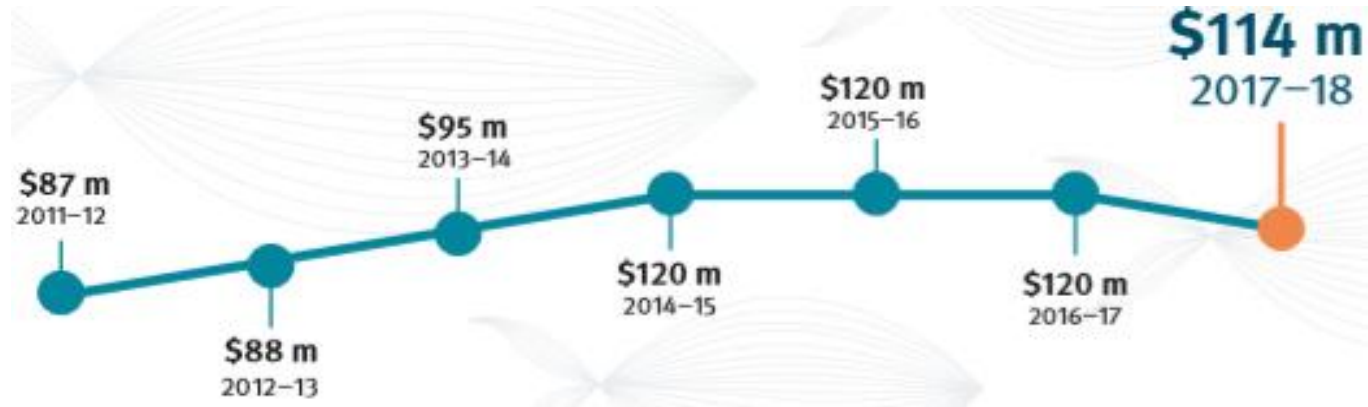


**Queensland**  
Government






# Overview

- Current status of aquaculture
  - Review of aquaculture regulation
  - Aquaculture development areas
-

# Current status of aquaculture



# Current status of aquaculture

Production (tonnes)		2016-17	2017-18	Production (tonnes)		2016-17	2017-18
 Prawns	↓	4264	3921	 Freshwater fish	↓	269	232
 Redclaw	↓	65	49	 Other	↓	284	176
 Barramundi	↑	2987	3061	<b>TOTAL</b>	↓	7869	<b>7439</b>

# Review of aquaculture regulation

- Complex licensing requirements
  - Limited areas suitable for land-based marine aquaculture
  - Limited major aquaculture developments
  - Queensland Competition Authority investigation
-

# Queensland Competition Authority

- A key recommendation of final report:
    - Creation of 450 hectare terrestrial aquaculture development areas suitable for aquaculture operations
-

# Identification of aquaculture development areas



**Stage 1** – Methodology and selection criteria

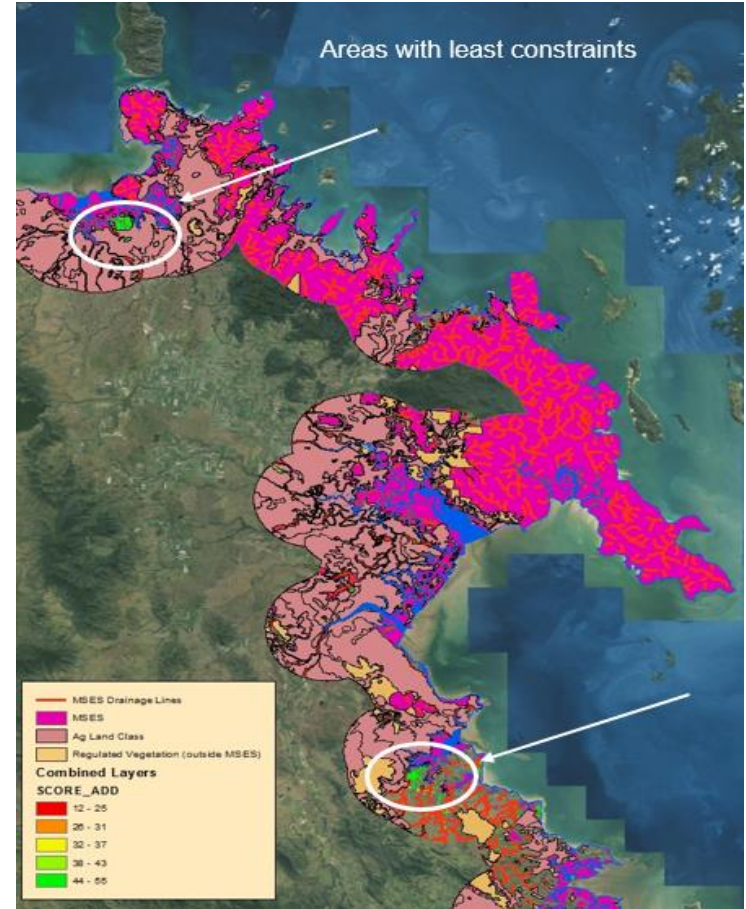
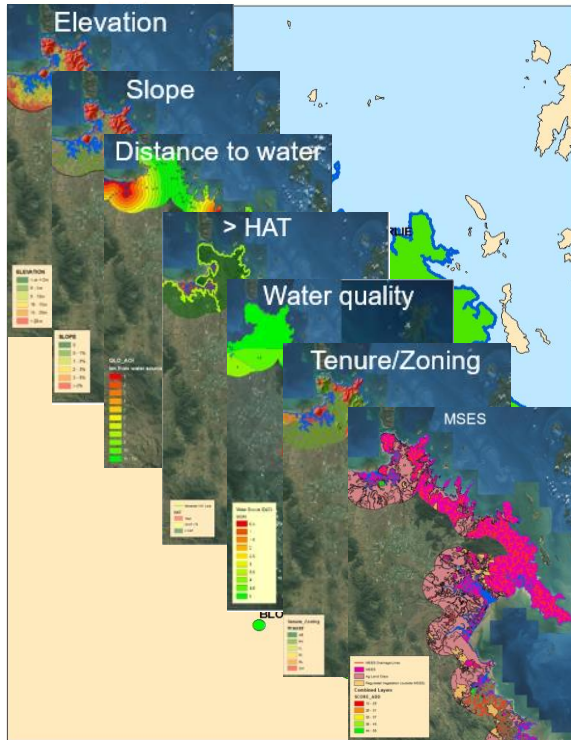
**Stage 2** – GIS desktop modelling

**Stage 3** – Consultation

**Stage 4** – Recognition of ADAs

---

# Mapping constraints





# Aquaculture development areas

	Location	Local government area	Size (ha)
1	Sleeper Log Creek / Leichhardt Creek	Townsville City Council	319
2	Abbot Bay / Good Fortune Bay	Whitsunday Regional Council	316
3	Bloomsbury	Mackay Regional Council	2126
4	Rockhampton / Casuarina Creek	Rockhampton Regional Council	2278
5	Rockhampton / Raglan Creek	Rockhampton / Gladstone Regional Councils	1430
6	Gladstone / Calliope River	Gladstone Regional Council	579
		<b>Total</b>	<b>7048</b>



# Where to from here ...

- Economic development and investment attraction
  - Policy environment coming together
  - Aquaculture Industry Development Network
  - Proactive case management
-

# ADAs in action

Key engagement targets:

1. Landholders
  2. Proponents
  3. Statutory authorities
-

# Landholders

- No compulsory acquisition
  - Highlight opportunities
  - Existing land use can continue
  - Highlight investment options
  - Seek expressions of interest
-

# Proponents

- Seek out aquaculture investors
  - Define objectives and business matching with landholders
  - Case management support
-

# Statutory authorities

- State and local government
  - What approvals and conditions look like
  - Pre-defining model operating conditions
  - Pre-defining statutory authority requirements
-

# Contact us

## **Mark Allen**

Fisheries Manager

Fisheries Queensland

[mark.allen@daf.qld.gov.au](mailto:mark.allen@daf.qld.gov.au)

## **Stephen Smith**

Manager, Strategic Projects and Planning

Rural Economic Development

[stephen.smith@daf.qld.gov.au](mailto:stephen.smith@daf.qld.gov.au)

---